



KWANTLEN POLYTECHNIC UNIVERSITY

WHERE  
THOUGHT  
MEETS  
ACTION  
KPU

VIEWBOOK



2024  
2023

KPU.CA



# Wel come you all mi ce:p k<sup>w</sup>ət x<sup>w</sup>iləm

Exploring your post-secondary journey is an amazing place to be! There are many paths to forge, and you believe in one that is different from everyone else. We're here to support you throughout your entire educational journey—from application to graduation.



Kwantlen Polytechnic University's five campuses are situated in a region that overlaps with the traditional and ancestral lands of the Coast Salish peoples. We thank them for sharing their land and resources with us in friendship and peace. We honour our name, which the Kwantlen First Nation has graciously shared with us. Kwantlen means "tireless runner" and we strive to always be tireless in our pursuit of knowledge and understanding.



Why stop at theory when you can also harness the power of experience?



*Craston Wong*  
BACHELOR OF BUSINESS ADMINISTRATION,  
MARKETING MANAGEMENT,  
CO-OPERATIVE EDUCATION OPTION, GRAD



an education as unique as you are

# Professions aren't "on paper"

As Canada's only polytechnic university, our programs combine courses with real-world experience; including work-based training, practicums, applied research, studios, labs, experiential learning, field schools, and co-operative education.

Why stop at theory when you can also harness the power of experience? Launch your career and make a positive impact on your community with experiential learning at KPU: where thought meets action.



## Inside

New Programs	6
Faculties	8
Co-op and Work Experience	10
Student Life	12
What Does it Cost?	14
KPU Campuses	16
Requirements	18
<b>Program Details</b>	<b>20-27</b>
Ready to Apply	28
Worksheet	29
Steps to Apply	31

Tell stories that transport us to other worlds

Student work - Harshid (Advanced VFX)

Student work - Sidney Yang (Advanced 3D Animation)

Student work - Angelina Vedernikova (Advanced 3D Animation)

# Boldly unique, only at KPU.

## Entertainment Arts

Technology gives creative people incredible power to tell stories that transport us to other worlds, inspire us, and challenge us.

Entertainment Arts studies at KPU offers foundational and advanced credentials in animation, video game, and visual effects development. Led by instructors who work in the industry, these digital arts programs deliver a hands-on education with the practical knowledge that studios are looking for.

## Programs

### Certificate | FOUNDATION IN ENTERTAINMENT ARTS

A full-time, one-year program prepares graduates for entry level production work in the entertainment arts industry and future study in advanced, diploma-level programs in 2D digital animation, 3D animation and 3D modelling, VFX and game development.

### Diploma | ADVANCED 3D ANIMATION AND 3D MODELLING

A full-time, two-year program focused on the fundamental skills, theory, software, tools, processes and production of 3D animation and 3D modelling.

### Diploma | ADVANCED VFX (VIRTUAL PRODUCTION)

A full-time, two-year program focused on the core principles of visual effects, specializations (modelling, sculpting, texturing/surfacing, lighting, etc.) and the integration of virtual production workflows and pipelines.

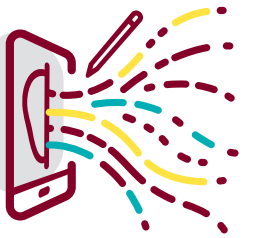
### Diploma | ADVANCED GAME DEVELOPMENT

A full-time, two-year program that covers game development's core disciplines: art, design, programming, and production.

### Diploma | ADVANCED 2D DIGITAL ANIMATION PRODUCTION

A full-time, two-year program focuses on the fundamental skills, theory, software, tools, processes and production of 2D animation.

» [kpu.ca/arts/entertainment-arts](https://kpu.ca/arts/entertainment-arts)



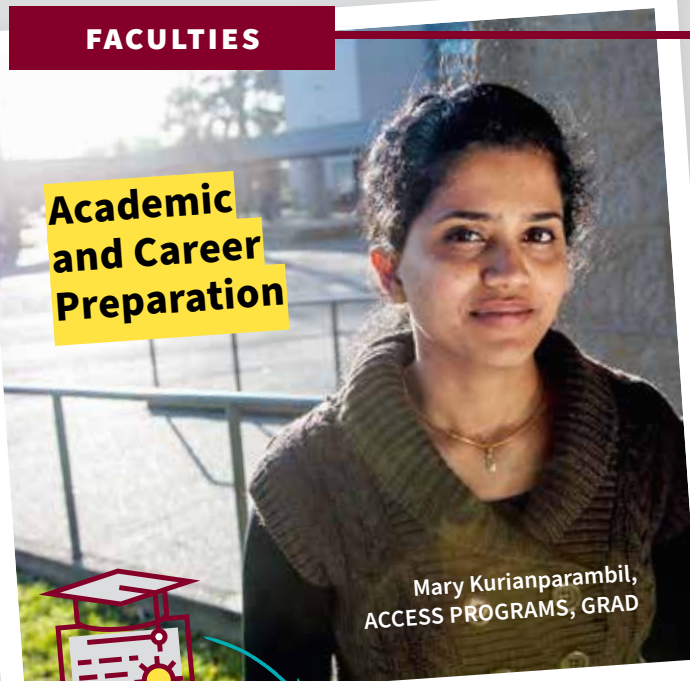
## Student Work Initiative

KPU Entertainment Arts students have the opportunity to participate in the Centre for Entertainment Arts' Student Work Initiative. This optional program connects students with top industry studios for paid work placements while completing their studies.

Coordinated employment opportunities allow students to work part-time up to 20 hours a week and earn industry-standard compensation.

## FACULTIES

### Academic and Career Preparation



Mary Kurianparambil,  
ACCESS PROGRAMS, GRAD



You can do great things and we can help as you build your skills and experience and take the next step towards your goals. With a range of upgrading and preparatory courses you'll be prepared and confident to pursue anything. [See all ACP programs page 20](#)

### Arts



Roop Johal,  
GENERAL STUDIES, GRAD



Explore a range of disciplines, collaborate with other students, and enhance your skills as a critical thinker and creative problem solver. [See all Arts programs pages 20-21](#)

### Melville School of Business



Shawn Bhatti,  
HUMAN RESOURCES, GRAD



Get the practical experience, professional connections, and extensive knowledge to succeed in your business venture and adapt to the changing needs of the evolving business world. [See all Business programs pages 22-23](#)

### Wilson School of Design



Sara Jonsdottir,  
FASHION DESIGN &  
TECHNOLOGY, GRAD



Work alongside our talented faculty as you develop and refine your portfolio, create brands and products, and perhaps even launch your own start up! [See all Design programs pages 23](#)

### Health

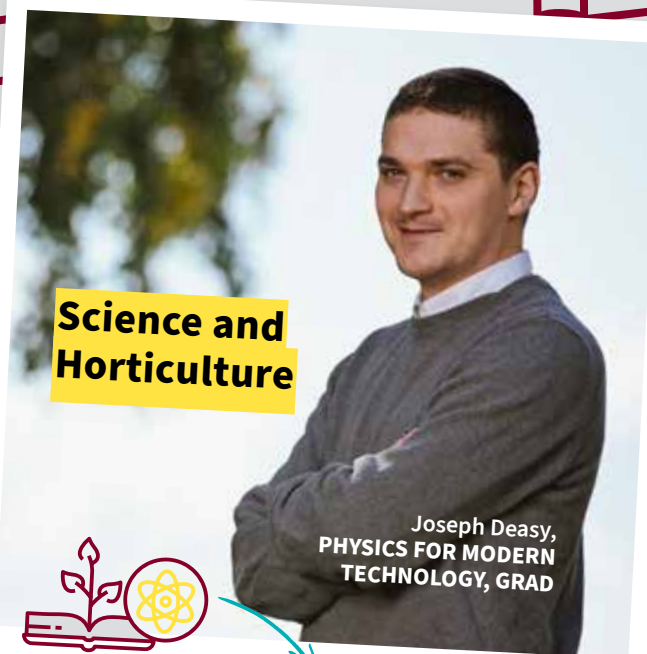


Andrew Yang,  
TRADITIONAL CHINESE  
MEDICINE, GRAD

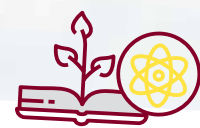


KPU is committed to giving you the technical and communication skills that are vital in the healthcare field and will ready you to work in a variety of settings and environments. [See all Health programs pages 23-24](#)

### Science and Horticulture

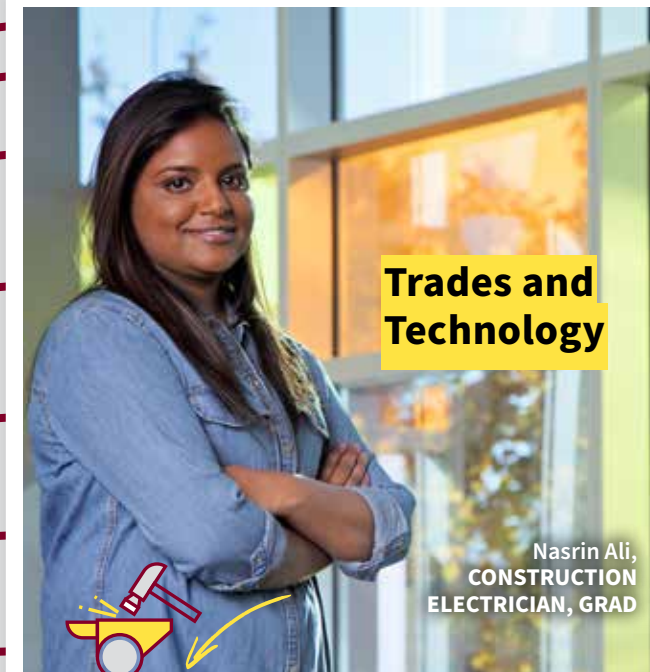


Joseph Deasy,  
PHYSICS FOR MODERN  
TECHNOLOGY, GRAD



Learn from academics dedicated to their fields through a theory-plus-applied-learning approach. Dive into traditional programs like biology and mathematics, or venture into sustainable agriculture, brewing and more. [See all Science and Horticulture programs pages 25-26](#)

### Trades and Technology



Nasrin Ali,  
CONSTRUCTION  
ELECTRICIAN, GRAD



Get the specialized training, hands-on experience and practical knowledge you need to quickly begin an exciting and in-demand career. [See all Trades and Technology programs pages 26-27](#)

"I was able to take knowledge from so many of my classes and apply it to a real work environment."

*Emily Haugen*

BACHELOR OF BUSINESS ADMINISTRATION - MARKETING MANAGEMENT, GRAD  
CERTIFICATE IN NGO AND NONPROFIT STUDIES, GRAD  
BUSINESS STRATEGY INTERNSHIP

# Careers start here

For more than 40 years, KPU has provided students with the skills they need for the careers they want. KPU offers a range of programs with opportunities for **hands-on experience** and Work-Integrated Learning. KPU pairs students in a variety of ways, through faculty-monitored projects to Practicum or Co-op. We encourage students and external partners to work together since it gives students an opportunity to apply attitudes, skills and knowledge in an employment or community setting.

## In the Workplace:

### › Co-operative Education

Apply for a co-op program to alternate between study and paid work semesters, using your course knowledge and skills on the job.

- » Accounting
- » Computer Aided Design and Drafting
- » Computer Information Systems
- » Criminology
- » Entrepreneurial Leadership
- » Environmental Protection Technology
- » [kpu.ca/co-op](http://kpu.ca/co-op)
- » Human Resources Management
- » Information Technology
- » Marketing Management
- » Operations and Supply Chain Management
- » Public Relations

### › Workplace Practicum Skills Development

### › Industry and Community Projects

## In the Classroom:

- › Curriculum-Based Projects with Faculty Involvement
- › Applied Research Projects
- › Industry and Community Projects

» [kpu.ca/experiential](http://kpu.ca/experiential)



## Did you know?

KPU has a Career Development Centre that supports KPU students and graduates by transforming their learning experience into work experience.

- ✓ Career days and volunteer/job fairs
- ✓ Career advising, resume review, career prep workshops
- ✓ Job postings exclusive to KPU students and alumni
- ✓ Employer/industry information sessions

» [kpu.ca/careercentre](http://kpu.ca/careercentre)



There are **40+** programs that offer multiple avenues for hands-on learning

# Student Life

No matter where you are in your educational journey, student services are available to assist you as you work towards your academic, professional, and personal goals.

## Indigenous Services – The Gathering Place

cecewat ta lelam (Helping House) works collaboratively with multiple departments across the University to support the success of Indigenous students, while acknowledging and honouring the diversity in their identities, cultures, languages and experiences as they pursue academic studies.



### Services and Initiatives

- » Academic, Financial and Transition Supports
- » Elder and Cultural Advisor Program
- » Indigenous Student Recruitment

- » Indigenous Online Orientation for New Students
- » Indigenous Book Club
- » Peer Mentorship
- » Cultural and social events
- » [kpu.ca/indigenous](https://kpu.ca/indigenous)

## Study Abroad

Step outside your comfort zone and become a global citizen! Study Abroad allows you to experience global learning while meeting your program requirements.



### » [kpu.ca/studyabroad](https://kpu.ca/studyabroad)

Study Abroad specific scholarships and funding are available

### Opportunities

#### Exchange

- » May be one semester long, or a full year
- » Study at a partner institution
- » Earn KPU credits while paying KPU fees

#### Field School

- » Several weeks long
- » Travel as a group with classmates and an instructor
- » Explore the Amazon, Europe, and parts of Canada

#### Short Term Programs

- » 2-4 weeks long
- » Study and participate in cultural experiences and excursions during the summer semester

#### Virtual Global Opportunities

- » Virtually participate in academic exchanges, internships, or extracurricular activities with partners around the world
- » Experience a new culture and build an international network while staying local



## Peer Wellness Services

Success in university involves caring for your mental and physical health. With KPU's Peer Wellness Services, you can depend on your peers to support your wellbeing. As active allies, this safe space is focused on building connections through inclusion and diversity, while being a one-stop shop for all health resources KPU has to offer.

» [kpu.ca/peerwellness](https://kpu.ca/peerwellness)



## Student Supports & Resources

If you need some help course planning, want to find a tutor to review your next paper, or are looking for a cool club to join, **we've got you covered.**

- ✓ Academic Advising
- ✓ Accessibility Services
- ✓ Career Development Center
- ✓ Counselling Services
- ✓ Inter-campus Shuttle
- ✓ Indigenous Student Services
- ✓ International
- ✓ IT Resources
- ✓ Kwantlen Student Association
- ✓ Learning Centers
- ✓ Library Services
- ✓ Multi-Faith Centers
- ✓ Orientation and Transitions
- ✓ Scholarships, Awards, and Financial Assistance
- ✓ Sports and Recreation
- ✓ U-Pass/Multipass

» [kpu.ca/studentervices](https://kpu.ca/studentervices)

# What does it cost?

Tuition and student fees are calculated based on your specific program and courses, and how many classes (or credits) you're taking each term. We want you to have all the information about the cost of your education, before you begin. KPU's tuition rates are affordable and competitive with other post-secondary institutions.



Our online tuition estimator will calculate the approximate costs for your program of choice.

» [kpu.ca/tuitionestimator](https://kpu.ca/tuitionestimator)



**PART-TIME STUDIES**

**\$4,050**

Starting cost based on 6 credits per semester x 3 semesters a year



**FULL-TIME STUDIES**

**\$5,625**

Starting cost based on 9 credits per semester x 3 semesters a year



**TRADES PROGRAM**

**\$4,200**

Starting cost based on 24-week foundations program

## Semester-Based Programs

	3 Credits (1 COURSE)	9 Credits (3 COURSES)	15 Credits (5 COURSES)
<sup>1</sup> Tuition Fees	\$460.38	\$1,381.14	\$2,301.90
Student Fees	\$32.22	\$96.66	\$161.10
KSA Fees	\$48.31	\$112.21	\$169.11
<b>Subtotal</b>	<b>\$540.91</b>	<b>\$1590.01</b>	<b>\$2632.11</b>
KSA Multipass (\$54.20/month)	\$216.80	\$216.80	\$216.80
<sup>2</sup> Health & Dental (Annually)	\$200.85	\$200.85	\$200.85

## Non Semester-Based Programs

	24-Week Program
<sup>1</sup> Tuition Fees	\$3,208.56
Student Fees	\$224.60
KSA Fees	\$238.96
<b>Subtotal</b>	<b>\$3,672.12</b>
KSA Multipass (\$54.20/month)	\$325.20
<sup>2</sup> Health & Dental (Annually)	\$200.85

All costs shown are approximate. <sup>1</sup>Tuition rate applies to most programs <sup>2</sup>Health and dental opt outs are available



Carmen Suarez Dompeier  
HORTICULTURE TECHNOLOGY, STUDENT  
2022 PRESIDENT'S SCHOLARSHIP AWARD



## Scholarships and Awards

KPU recognizes achievements and supports student success through scholarships, awards, bursaries and financial assistance.

Entrance Scholarships and Awards await new students:

**PRESIDENT'S ENTRANCE SCHOLARSHIPS**

6x **\$20,000**

**MERIT ENTRANCE SCHOLARSHIPS**

18x **\$5,000**

**INDIGENOUS ENTRANCE SCHOLARSHIPS**

3x **\$5,000**

### Fall 2023 Entrance Scholarships and Donor-Funded Entrance Awards

Applications open October 15, 2022 | **Deadline to apply April 15, 2023**

### Spring 2024 Entrance Scholarships and Donor-Funded Entrance Awards

Applications open February 15, 2023 | **Deadline to apply August 15, 2023**

### Applying is easy.

To apply for all entrance scholarships and awards all you need to fill out is one convenient form online.

» [kpu.ca/awards](https://kpu.ca/awards)



## Zero Textbook Costs

**All the knowledge, none of the costs.**

Zero Textbook Costs (ZTC) are KPU courses that don't require you to spend money on expensive textbooks.

### How does it work?

ZTC courses use open education resources, online content, and library materials to save you from having to buy books. Since we launched the ZTC program, our students have saved over \$8 million on textbooks!

» [kpu.ca/ztc](https://kpu.ca/ztc)

**Did you know?**  
You can search specifically for ZTC courses during your registration!



## KPU CAMPUSES

# Our Places & Spaces

FROM OUR LIBRARIES TO FITNESS CENTRES, KPU HAS THE FACILITIES AND EQUIPMENT YOU'D EXPECT IN A MODERN UNIVERSITY—AND SOME THAT MIGHT SURPRISE YOU.

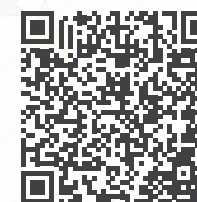
## TRANSIT



Our campuses are connected to major transit hubs and popular routes. KPU and the Kwantlen Student Association also operate an inter-campus shuttle bus between KPU Surrey, KPU Tech and KPU Langley.

### KPU CIVIC PLAZA

- » Located in Surrey City Centre
- » Dedicated to advanced training programs and professional development



### KPU RICHMOND

- » Houses the Wilson School of Design and agriculture programs
- » Home to our new Entertainment Arts programs, as well as many arts and business courses



### KPU SURREY

- » Often called the main campus
- » Features many lab spaces and art studios
- » Offers a mix of programs in arts, science, and business



### KPU TECH

- » Located in Cloverdale
- » Dedicated to trades and technology programs



### KPU LANGLEY

- » Offers health, brewing, and horticulture programs
- » Many arts and business courses are also available here



KPU Tech

KPU Langley

KPU Surrey

KPU Richmond

KPU Civic Plaza

## REQUIREMENTS

We're here to support you throughout your entire educational journey

KPU offers over **140 programs** across a variety of faculties and topics. Each program falls into one of the **academic levels**:

### PREPARATORY PROGRAM

Pre-undergraduate education designed to upgrade or enhance academic skills in preparation for undergraduate studies.

### UNDERGRADUATE PROGRAM

Post-secondary education at the university or college level that includes either baccalaureate or post-baccalaureate course work.

### GRADUATE PROGRAM

Post-secondary education beyond the baccalaureate or post-baccalaureate level.

### VOCATIONAL PROGRAMS

Applied education, usually in a program of study of less than two years, that leads to a credential specific to a trade or profession.

## How long does it take?

**CITATION** Under 6 Months

**CERTIFICATE** 6-12 Months

**DIPLOMA** 2 Years

**ASSOCIATE DEGREE** 2 Years

**APPRENTICESHIP** 4 Years

**including Work Experience**

**BACHELOR'S DEGREE** 4 Years

**POST-BACCALAUREATE DIPLOMA**

1-2 Years

**GRADUATE CERTIFICATE** 1-2 Years

**GRADUATE DIPLOMA** 1-2 Years

*Exact program length and details may vary. Please check [kpu.ca/calendar](http://kpu.ca/calendar) for more information.*

## What is the difference between open intake and limited intake?

KPU has two types of intakes: **Open and Limited**. Open intake programs do not limit the number of students that are admitted in each application cycle. This is different from limited intake, which only accept a set number of students in each application cycle and may have additional admission requirements.

*Learn the intake for each of our programs on the program details pages (p.18 -25).*

## How can I meet the meet English requirement?

When you apply to KPU, you will need to satisfy KPU's English Proficiency requirement. For an undergraduate or graduate program, you must satisfy KPU's Undergraduate English Proficiency Requirement in **ONE** of the following ways:

### HIGH SCHOOL COURSE OPTIONS

» BC English Studies 12, English First Peoples 12 or Literary Studies 12 with a C+ (or equivalent)

### or OTHER OPTIONS

» For a full list of options please refer to the university calendar.

### or TESTING OPTIONS

» KPU English Placement Test **or**

» IELTS: overall band of 6.5, with a minimum 6.0 in each band **or**

» TOEFL: iBT 88 or higher, with no sub-score less than 20 **or**

» Duolingo English Test: Score of 110 or higher



*Additional faculty admission requirements can also be found in the program details pages 20-27.*

## Are there online courses?



One thing that we've learned over the last few years, is that there is a strong demand for online learning. We have adapted our class formats to include blended and online options. And we will continue to do what we do so well – the in-person class experience.



**What if I don't meet the English requirements?**

**DON'T WORRY!** If you don't currently meet undergraduate English requirements, you may be eligible for a pathway where you can upgrade courses as necessary and transition into undergraduate studies.

» [kpu.ca/pathway](http://kpu.ca/pathway)

**Does KPU have English testing to meet the English requirement?**

Yes! A variety of assessment and testing options are available at most campuses and virtually.

» [kpu.ca/testing](http://kpu.ca/testing)



For additional information on testing options:

» [calendar.kpu.ca/admissions/assessment-testing](http://calendar.kpu.ca/admissions/assessment-testing)



## KPU PROGRAM DETAILS

### Faculty of Academic and Career Preparation

PROGRAM	CREDENTIAL	FORMAT	ADMISSION REQUIREMENTS	START DATES
<b>PREPARATORY PROGRAMS</b>				
<b>Employment and Community Studies</b> 	• Citation	Full-time Part-time	Attend a program information session • Interview with program faculty to determine: fit for the academic program, satisfactory English ability as assessed according to departmental guidelines • Admission is at the discretion of the program faculty based on the above requirements	Fall September Spring January
<b>Pathway to Undergraduate Studies</b> 	• English Language Studies Diploma	Full-time Part-time	Duolingo English Test: Minimum score of 65 <b>or</b> IELTS: With a minimum of 4.0 in each band <b>or</b> KPU English test <b>or</b> TOEFL: iBT 32 or higher, with 12 in Writing and Speaking, and 6 in Listening and Reading	Fall September Spring January Summer May
<b>Pathway to Undergraduate Studies</b> 	• BC Adult Graduation Diploma	Full-time Part-time	BC Communications 12 (C+) or equivalent	Fall September Spring January Summer May

### Faculty of Arts

PROGRAM	CREDENTIAL	FORMAT	ADMISSION REQUIREMENTS	START DATES
<b>GRADUATE PROGRAMS</b>				
<b>Sustainable Food Systems and Security</b> 	• Graduate • Certificate	Part-time	English Studies 12 C+ (67%) or equivalent • Successful completion of a recognized undergraduate or graduate degree with a minimum cumulative GPA of 3.0 • A statement of intent • Three references (one academic, two professional)	Fall September
<b>UNDERGRADUATE PROGRAMS</b>				
<b>Advanced 2D Digital Animation</b> 	• Diploma	Full-time	English Studies 12 C+ (67%) or equivalent • Portfolio review	Fall September Spring January Summer May
<b>Advanced 3D Animation and 3D Modelling</b> 	• Diploma	Full-time	English Studies 12 C+ (67%) or equivalent • Portfolio review	Fall September Spring January Summer May
<b>Advanced Game Development</b> 	• Diploma	Full-time	English Studies 12 C+ (67%) or equivalent • Portfolio review.	Fall September Spring January Summer May
<b>Advanced VFX (Virtual Production)</b> 	• Diploma	Full-time	English Studies 12 C+ (67%) or equivalent • Portfolio review.	Fall September Spring January Summer May
<b>Anthropology</b> 	• Bachelor of Arts • Minor • Associate of Arts	Full-time Part-time	English Studies 12 C+ (67%) or equivalent	Fall September Spring January Summer May
<b>Arts</b> 	• Diploma • Certificate	Full-time Part-time	English Studies 12 C+ (67%) or equivalent	Fall September Spring January Summer May
<b>Asian Studies</b> 	• Bachelor of Arts • Minor • Associate of Arts	Full-time Part-time	English Studies 12 C+ (67%) or equivalent	Fall September Spring January Summer May
<b>Counselling</b> 	• Minor	Full-time Part-time	English Studies 12 C+ (67%) or equivalent	Fall September Spring January Summer May
<b>Creative Writing</b> 	• Bachelor of Arts • Minor • Associate of Arts	Full-time Part-time	English Studies 12 C+ (67%) or equivalent <b>Other program recommendations:</b> English Studies 12 (B)	Fall September Spring January Summer May

**KPU Campuses** Civic Plaza Langley Richmond Surrey Tech (Cloverdale) **Multiple Campuses:** This program offers courses on multiple campuses and/or online  
**Intake Type** Limited Intake Open Intake | **New Program**

PROGRAM	CREDENTIAL	FORMAT	ADMISSION REQUIREMENTS	START DATES
<b>Criminology</b> 	• Bachelor of Arts (Also: Honours) • Minor • Associate of Arts • Diploma • Certificate	Full-time Part-time Co-op	English Studies 12 C+ (67%) or equivalent	Fall September Spring January Summer May
<b>Education Assistant</b> 	• Certificate	Full-time Part-time	English Studies 12 C+ (67%) or equivalent • Approximately 100 hours of successful experience volunteering or working with children or youth, preferably in the schools. (Applicants must submit two letters from employers or responsible persons in the community, indicating the hours of experience completed.) • Attendance at an information session. » <b>Once offer is made:</b> Criminal Record Check	Fall September
<b>English</b> 	• Bachelor of Arts • Minor • Associate of Arts	Full-time Part-time	English Studies 12 C+ (67%) or equivalent	Fall September Spring January Summer May
<b>Fine Arts</b> 	• Bachelor of Fine Arts, Visual Arts • Diploma • Certificate	Full-time Part-time	English Studies 12 C+ (67%) or equivalent	Fall September Spring January Summer May
<b>Foundation in Entertainment Arts</b> 	• Certificate	Full-time	English Studies 12 C+ (67%) or equivalent	Fall September Spring January Summer May
<b>General Studies</b> 	• Bachelor of Arts • Associate of Arts • Diploma	Full-time Part-time	English Studies 12 C+ (67%) or equivalent	Fall September Spring January Summer May
<b>Geography</b> 	• Bachelor of Arts • Minor • Associate of Arts	Full-time Part-time	English Studies 12 C+ (67%) or equivalent	Fall September Spring January Summer May
<b>History</b> 	• Bachelor of Arts • Minor • Associate of Arts	Full-time Part-time	English Studies 12 C+ (67%) or equivalent	Fall September Spring January Summer May
<b>Indigenous Community Justice</b> 	• Minor	Full-time Part-time	English Studies 12 C+ (67%) or equivalent	Fall September Spring January Summer May
<b>Journalism</b> 	• Bachelor of Journalism (Also: Honours) • Minor	Full-time Part-time	English Studies 12 C+ (67%) or equivalent. Other program recommendations: English Studies 12 (B)	Fall September Spring January Summer May
<b>Language and Cultures</b> 	• Minor	Full-time Part-time	English Studies 12 C+ (67%) or equivalent	Fall September Spring January Summer May
<b>Music</b> 	• Minor	Full-time Part-time	English Studies 12 C+ (67%) or equivalent	Fall September Spring January Summer May
<b>NGO &amp; Nonprofit Studies</b> 	• Certificate	Full-time Part-time	English Studies 12 C+ (67%) or equivalent	Fall September Spring January Summer May
<b>Philosophy</b> 	• Bachelor of Arts (Also: Honours) • Minor • Associate of Arts	Full-time Part-time	English Studies 12 C+ (67%) or equivalent	Fall September Spring January Summer May
<b>Policy Studies</b> 	• Bachelor of Arts • Minor	Full-time Part-time	English Studies 12 C+ (67%) or equivalent	Fall September Spring January Summer May
<b>Political Science</b> 	• Bachelor of Arts • Minor • Associate of Arts	Full-time Part-time	English Studies 12 C+ (67%) or equivalent	Fall September Spring January Summer May
<b>Psychology</b> 	• Bachelor of Science (Also: Honours) • Bachelor of Applied Arts (Also: Honours) • Bachelor of Arts (Also: Honours) • Minor • Associate of Arts	Full-time Part-time	English Studies 12 C+ (67%) or equivalent Other program recommendations: Bachelor of Science - Chemistry 12 (C+) • Level A1 of the Math Alternatives Table • Physics 12 (C-)	Fall September Spring January Summer May
<b>Sociology</b> 	• Bachelor of Arts • Minor • Associate of Arts	Full-time Part-time	English Studies 12 C+ (67%) or equivalent	Fall September Spring January Summer May

## Melville School of Business

PROGRAM	CREDENTIAL	FORMAT	ADMISSION REQUIREMENTS	
<b>GRADUATE PROGRAMS</b>				
<b>Global Business Management</b> C LI	• Graduate Diploma in Business Administration	Full-time Part-time	English Studies 12 C+ (67%) or equivalent • Successful completion of a recognized undergraduate* or graduate degree with a minimum cumulative GPA of 2.67 (combination of education and relevant professional experience may be considered) • A statement of intent in the program • Two professional references	Fall September Spring January
<b>Green Business Management &amp; Sustainability</b> C LI	• Graduate Diploma in Business Administration	Full-time Part-time	English Studies 12 C+ (67%) or equivalent • Successful completion of a recognized undergraduate* or graduate degree with a minimum cumulative GPA of 2.67 (combination of education and relevant professional experience may be considered) • A statement of intent in the program • Two professional references	Fall September Spring January
<b>POST BACCALAUREATE PROGRAMS</b>				
<b>Accounting</b> C OI	• Post Baccalaureate Diploma	Full-time Part-time Co-op	English Studies 12 C+ (67%) or equivalent • Successful completion of a recognized undergraduate degree in any discipline.	Fall September Spring January Summer May
<b>Human Resources Management</b> C LI	• Post Baccalaureate Diploma	Full-time Part-time Co-op	English Studies 12 C+ (67%) or equivalent • Successful completion of a recognized undergraduate degree with a GPA equivalent of 2.33 or higher.	Fall September Spring January Summer May
<b>Operations &amp; Supply Chain Management</b> C LI	• Post Baccalaureate Diploma	Full-time Part-time Co-op	English Studies 12 C+ (67%) or equivalent • Successful completion of a recognized undergraduate degree or successful completion of a recognized technical or science diploma, along with a minimum of 5 years related work experience.	Fall September Spring January Summer May
<b>Technical Management &amp; Services</b> C LI	• Post Baccalaureate Diploma	Full-time Part-time	English Studies 12 C+ (67%) or equivalent • Successful completion of a recognized undergraduate or graduate degree in science or technology or successful completion of a recognized technical or science diploma, along with a minimum of 5 years of related work experience.	Fall September Spring January Summer May
<b>UNDERGRADUATE PROGRAMS</b>				
<b>Accounting</b> M OI	• Bachelor of Business Administration • Diploma • Certificate	Full-time Part-time Co-op	English Studies 12 C+ (67%) or equivalent	Fall September Spring January Summer May
<b>Business Administration</b> M OI	• Diploma	Full-time Part-time	English Studies 12 C+ (67%) or equivalent <b>Other program recommendations:</b> Level B1 of the Math Alternatives Table	Fall September Spring January Summer May
<b>Business Management</b> M OI	• Diploma	Full-time Part-time	English Studies 12 C+ (67%) or equivalent	Fall September Spring January Summer May
<b>Computer Information Systems</b> M OI	• Diploma • Certificate	Full-time Part-time Co-op	English Studies 12 C+ (67%) or equivalent <b>Other program recommendations:</b> Level E1 of the Math Alternatives Table	Fall September Spring January Summer May
<b>Economics</b> M OI	• Minor • Associate of Arts	Full-time Part-time	English Studies 12 C+ (67%) or equivalent	Fall September Spring January Summer May
<b>Entrepreneurial Leadership</b> M OI	• Bachelor of Business Administration	Full-time Part-time Co-op	English Studies 12 C+ (67%) or equivalent	Fall September Spring January Summer May
<b>General Business Studies</b> M OI	• Diploma • Certificate	Full-time Part-time	English Studies 12 C+ (67%) or equivalent	Fall September Spring January Summer May
<b>Human Resources Management</b> M OI	• Bachelor of Business Administration	Full-time Part-time Co-op	English Studies 12 C+ (67%) or equivalent	Fall September Spring January Summer May
<b>Information Technology</b> M OI	• Bachelor of Technology	Full-time Part-time Co-op	English Studies 12 C+ (67%) or equivalent <b>Other program recommendations:</b> Level E1 of the Math Alternatives Table	Fall September Spring January Summer May

KPU Campuses C Civic Plaza L Langley R Richmond S Surrey T Tech (Cloverdale) M Multiple Campuses: This program offers courses on multiple campuses and/or online  
Intake Type LI Limited Intake OI Open Intake | New Program

PROGRAM	CREDENTIAL	FORMAT	ADMISSION REQUIREMENTS	
<b>Legal Administrative Studies</b> S LI	• Certificate	Full-time	English Studies 12 C+ (67%) or equivalent	Fall September
<b>Marketing Management</b> M OI	• Bachelor of Business Administration • Diploma	Full-time Part-time Co-op	English Studies 12 C+ (67%) or equivalent	Fall September Spring January Summer May
<b>Public Relations</b> M OI	• Diploma	Full-time Part-time Co-op	English Studies 12 C+ (67%) or equivalent	Fall September Spring January Summer May

## Wilson School of Design

PROGRAM	CREDENTIAL	FORMAT	ADMISSION REQUIREMENTS	START DATES
<b>POST BACCALAUREATE PROGRAMS</b>				
<b>Technical Apparel Design</b> R LI	• Post Baccalaureate	Full-time	English Studies 12 C+ (67%) or equivalent • Successful completion of a recognized undergraduate degree, or a design-related diploma or associate degree along with a minimum of 5 years of related work experience • Letter of Interest Package • Interview	Fall September
<b>UNDERGRADUATE PROGRAMS</b>				
<b>Fashion &amp; Technology</b> R LI	• Bachelor of Design • Diploma	Full-time	English Studies 12 C+ (67%) or equivalent • Portfolio Review and Interview	Fall September
<b>Fashion Marketing</b> R LI	• Diploma	Full-time	English Studies 12 C+ (67%) or equivalent • Letter of Interest Package • Information Session	Fall September
<b>Foundations in Design</b> R LI	• Certificate	Full-time	English Studies 12 C+ (67%) or equivalent • Expression of Interest Package	Fall September
<b>Graphic Design for Marketing</b> R LI	• Bachelor of Design	Full-time	English Studies 12 C+ (67%) or equivalent • Portfolio Review and Interview	Fall September
<b>Interior Design</b> R LI	• Bachelor of Interior Design (Also: Honours)	Full-time	English Studies 12 C+ (67%) or equivalent • Portfolio Review and Interview	Fall September
<b>Product Design</b> R LI	• Bachelor of Design	Full-time	English Studies 12 C+ (67%) or equivalent • Portfolio Review and Interview	Fall September

## Faculty of Health

PROGRAM	CREDENTIAL	FORMAT	ADMISSION REQUIREMENTS	START DATES
<b>UNDERGRADUATE PROGRAMS</b>				
<b>Graduate Nurse, Internationally Educated Re-entry</b> L LI	• Certificate	Full-time	KPU's Undergraduate English Requirement • A Nursing Community Assessment Services (NCAS) Summary with: Section 2 with 50%, or less, of undemonstrated competency themes, or Section 2 with 51%, or more, undemonstrated competency themes, and successful completion of the KPU course PNUR 9030, Nurse Ready, including the Evolve online portion • OR A Substantially Equivalent Competency (SEC) Assessment Summary with: 50%, or less, unmet competencies overall, or 51%, or higher, unmet competencies overall, and successful completion of the KPU course PNUR 9030, Nurse Ready, including the Evolve online portion • OR A National Nursing Assessment Service (NNAS) Assessment indicating the graduation date from a nursing program and/or years of nursing practice. Applicants who have not practiced as a registered nurse and/or graduated from an RN program within 5 years from the start of the program will also be required to successfully complete the KPU course PNUR 9030, Nurse Ready, including the Evolve online portion. Applicants may be required to submit proof of employment. For further information see kpu.ca/cps/health. Once a conditional offer is made: Valid Canadian CPR Basic Life Support or CPR Health Care Provider. Note: CPR certification must remain current throughout the program • An acceptable Criminal Record Check through the Ministry of Public Safety and Solicitor General's Criminal Records Review Program within 6 months prior to the start of the program • Immunization Record Form reflecting required immunizations as per Practice Education Guidelines for BC.	Fall September Spring January Summer May

## Faculty of Health *continued*

PROGRAM	CREDENTIAL	FORMAT	ADMISSION REQUIREMENTS	START DATES
<b>UNDERGRADUATE PROGRAMS</b>				
<b>Nursing</b> L U	• Bachelor of Science in Nursing	Full-time	English Studies 12 C+ (67%) or equivalent • BIOL 1160 (C+) • BIOL 1260 (C+) • ENGL 1100 (C+) • MATH 1115 (C+) • 18 credits of undergraduate level courses with a minimum grade of C+ from any of: ANTH, HEAL 1100, HEAL 1150, HEAL 1180, HSCI, PHIL, PSYC, SOCI • Completion of the Computer-based Assessment for Sampling Personal Characteristics Assessment (CASPer) • Once conditional offer is made: Valid Canadian CPR Basic Life Support or CPR Health Care Provider. Note: CPR certification must remain current throughout the program • Current Standard First Aid Certificate • An acceptable Criminal Record Check through the Ministry of Public Safety and Solicitor General's Criminal Records Review Program within 6 months prior to the start of the program • Immunization Record Form reflecting required immunizations as per Practice Education Guidelines for BC.	Fall September Spring January
<b>Nursing, Advanced Entry</b> L U	• Bachelor of Science in Nursing	Full-time	English Studies 12 C+ (67%) or equivalent • Completion of a recognized undergraduate degree within the last 6 years, with a minimum cumulative GPA of 2.67, and including 30 undergraduate credits at the third and fourth-year level • 6 credits of undergraduate-level human anatomy and physiology with a minimum grade of C+ in each course • 6 credits from outside the Health discipline, including 3 credits for English (ENGL 1100 or equivalent) with a minimum grade of C+ in each course. • Once conditional offer is made: Valid Canadian CPR Basic Life Support or CPR Health Care Provider • Current Standard First Aid • An acceptable Criminal Record Check through the Ministry of Public Safety and Solicitor General's Criminal Records Review Program within 6 months prior to the start of the program • Immunization Record Form reflecting required immunizations as per Practice Education Guidelines for BC.	Fall September Spring January
<b>Psychiatric Nursing</b> L U	• Bachelor of Psychiatric Nursing	Full-time	English Studies 12 C+ (67%) or equivalent • BIOL 1160 (C+) • BIOL 1260 (C+) • ENGL 1100 (C+) • MATH 1115 (C+) • PSYC 1100 (C+) • PSYC 1200 (C+) • SOCI 1125 (C+) • 9 credits of undergraduate-level courses with a minimum grade of C+ from any of: ANTH, HEAL 1100, HEAL 1150, HEAL 1180, HSCI, PHIL, PSYC, SOCI • Completion of the Computer-based Assessment for Sampling Personal Characteristics Assessment (CASPer) • Admission selection will be based on the highest admission GPA of the above required courses in combination with the CASPer score • Once conditional offer is made: Valid Canadian CPR Basic Life Support (BLS) or CPR Health Care Provider (HCP). Note: CPR certification must remain current throughout the program • Current Standard First Aid Certificate • An acceptable Criminal Record Check through the Ministry of Public Safety and Solicitor General's Criminal Records Review Program within 6 months prior to the start of the program • Immunization Record Form reflecting required immunizations as per Practice Education Guidelines for BC.	Fall September Summer May
<b>Traditional Chinese Medicine - Acupuncture</b> R U	• Diploma	Full-time	English Studies 12 C+ (67%) or equivalent • Interview by the Program Chair and/or letters of reference, if requested • Once conditional offer is made: Canadian CPR Health Care Provider or Basic Life Support. Note: CPR certification must remain current throughout the program • An acceptable Criminal Record Check through the Ministry of Public Safety and Solicitor General's Criminal Records Review Program within 6 months prior to the start of the program • International applicants are required to provide a Criminal Record Search with the Vulnerable Sector from their country of origin • Immunization Record Form reflecting required immunizations as per Practice Education Guidelines for BC.	Fall September
<b>VOCATIONAL PROGRAMS</b>				
<b>Health Care Assistant</b> L U	• Certificate	Full-time	English 10 (C) or equivalent • OR Test of English as a Foreign Language (TOEFL): IBT 76 or higher, with no sub score less than 20 in Speaking and Listening and no sub score less than 18 in Reading and Writing, taken within the last two years • OR International English Language Testing System (IELTS): Overall band of 6.0 or higher, with a minimum 6.0 in the Speaking and Listening band, and a minimum 5.5 in Reading and Writing band, taken within the last two years • OR Canadian Academic English Language Assessment (CAEL): Score of 60 or higher with no sub score less than 50, taken within the last two years • Or Canadian Language Benchmark Placement Test (CLBPT): Listening 7, Speaking 7, Reading 6 and Writing 6, taken within the last year. • Once conditional offer is made: Food Safe Level I • Standard First Aid Certificate • CPR Level C • An acceptable Criminal Record Check through the Ministry of Public Safety and Solicitor General's Criminal Records Review Program within 6 months prior to the start of the program • Applicants who have lived outside Canada as an adult are required to secure a Criminal Record Search with the Vulnerable Sector from their country of origin. • Immunization Record Form reflecting required immunizations as per Practice Education Guidelines for BC. <i>This program is not currently open to applications from the public. KPU will only be accepting applications for those referred through the Health Career Access program.</i>	Fall September Spring January

\*NOTE: Practice Education Guidelines for BC outline immunizations for vaccine preventable communicable diseases required by students for participation in practice experiences. KPU Faculty of Health is required to comply with these requirements. Students who are unvaccinated may not be accepted into the program. Students who are accepted into the program will also be required to maintain immunizations as per the PEG.

KPU Campuses C Civic Plaza L Langley R Richmond S Surrey T Tech (Cloverdale) M Multiple Campuses: This program offers courses on multiple campuses and/or online  
Intake Type LI Limited Intake OI Open Intake | New Program

## Faculty of Science & Horticulture

PROGRAM	CREDENTIAL	FORMAT	ADMISSION REQUIREMENTS	START DATES
<b>UNDERGRADUATE PROGRAMS</b>				
<b>Biology</b> M OI	• Bachelor of Science (Also: Honours) • Minor	Full-time Part-time	English Studies 12 C+ (67%) or equivalent. <b>Other program recommendations:</b> English Studies 12 B or equivalent • Chemistry 12 C+ • Level B1 of the Math Alternatives Table • Physics 12 (P) • Biology 11 or 12	Fall September Spring January Summer May
<b>Brewing &amp; Brewery Operations</b> L U	• Diploma	Full-time	English Studies 12 C+ (67%) or equivalent • Portfolio Review • A minimum of 19 years of age by the first day of classes • Either (a) Chemistry 11 C+ and Level E1 of the Math Alternatives Table, or (b) Recommendation by the Admissions Selection Committee.	Fall September
<b>CADD Architectural and Mechanical Specialization</b> T U	• Diploma • Certificate • Citation	Full-time Co-op	English Studies 12 C+ (67%) or equivalent • Satisfy the math requirement at Level E1 of the Math Alternatives Table or through successful placement of the CADD Math Test • Complete the online info session or interview with a CADD department representative. NOTE: Level C1 of the Math Alternatives Table is required for the diploma.	Spring January
<b>CADD Architectural and Structural Specialization</b> T U	• Diploma • Certificate • Citation	Full-time Co-op	English Studies 12 C+ (67%) or equivalent • Satisfy the math requirement at Level E1 of the Math Alternatives Table or through successful placement of the CADD Math Test • Complete the online info session or interview with a CADD department representative. NOTE: Level C1 of the Math Alternatives Table is required for the diploma.	Fall September
<b>Engineering First-Year</b> M U	• Certificate	Full-time	English Studies 12 C+ (67%) or equivalent • Physics 12 C • Chemistry 12 C+ • Level A1 of the Math Alternatives Table	Fall September
<b>Environmental Protection Technology</b> L U	• Diploma of Technology	Full-time Part-time Co-op	English Studies 12 C+ (67%) or equivalent • Level E1 of the Math Alternatives Table • Chemistry 11 C+	Fall September
<b>General Science</b> M OI	• Associate of Science • Diploma	Full-time Part-time	English Studies 12 C+ (67%) or equivalent. <b>Other program recommendations:</b> Chemistry 12 C+ • Level B1 of the Math Alternatives Table • Physics 12 C-	Fall September Spring January Summer May
<b>Health Science</b> M OI	• Bachelor of Science (Also: Honours) • Minor	Full-time Part-time	English Studies 12 C+ (67%) or equivalent. <b>Other program recommendations:</b> English Studies 12 B or equivalent • Biology 11 and/or Biology 12 • Chemistry 12 C+ • Physics 12 P • Pre-Calculus 12 C+ or Level B1 of the Math Alternatives Table	Fall September Spring January Summer May
<b>Horticulture Specialization in</b> • Landscape Horticulture Systems • Sustainable Production Horticulture • Turf Management L OI	• Diploma	Full-time Part-time	English Studies 12 C+ (67%) or equivalent <b>Other program recommendations:</b> Level G1 of the Math Alternatives Table (Diploma)	Fall September Spring January Summer May
<b>Mathematics</b> M OI	• Bachelor of Science (Also: Honours) • Minor • Associate of Science	Full-time Part-time	English Studies 12 C+ (67%) or equivalent <b>Other program recommendations:</b> English Studies 12 B (or equivalent) for the biomath stream • Chemistry 12 C+ • Pre-Calculus 12 C+ or Level B1 of the Math Alternatives Table • Physics 12 P	Fall September Spring January Summer May NOTE: (Minor excluded from Summer)
<b>Physics for Modern Technology</b> M OI	• Bachelor of Science	Full-time Part-time	English Studies 12 C+ (67%) or equivalent <b>Other program recommendations:</b> Chemistry 12 C+ • Pre-Calculus 12 C+ or Level B1 of the Math Alternatives Table • Physics 12 C	Fall September Spring January Summer May
<b>Plant Health</b> L OI	• Bachelor of Horticulture Science • Minor	Full-time Part-time	English Studies 12 C+ (67%) or equivalent <b>Other program recommendations:</b> English Studies 12 B or equivalent • Chemistry 11 C+ or Chemistry 12 C- • Pre-Calculus 11 B or Level C1 of the Math Alternatives Table	Fall September Spring January Summer May
<b>Sustainable Agriculture</b> R OI	• Bachelor of Applied Science	Full-time Part-time	English Studies 12 C+ (67%) or equivalent <b>Other program recommendations:</b> Chemistry 11 C+ or Chemistry 12 C- • Biology 11 P or Biology 12 P • Pre-Calculus 11 B or Level C1 of the Math Alternatives Table	Fall September Spring January Summer May
<b>Urban Ecosystems</b> L OI	• Bachelor of Horticulture Science	Full-time Part-time	English Studies 12 C+ (67%) or equivalent <b>Other program recommendations:</b> Chemistry 11 C+ or Chemistry 12 C- • Level E1 of the Math Alternatives Table	Fall September Spring January Summer May

## Faculty of Science & Horticulture *continued*

PROGRAM	CREDENTIAL	FORMAT	ADMISSION REQUIREMENTS	START DATES
<b>APPRENTICESHIPS</b>				
<b>Arborist Technician</b> L	• Apprenticeship	Full-time	Completed KPU Apprentice Registration • Active apprentice registration in the BC Apprenticeship system • Valid Trade Worker Identification Number from the Industry Training Authority (ITA-ID)	Varies
<b>Landscape Horticulturalist</b> L Red Seal Trade	• Apprenticeship	Full-time	Completed KPU Apprentice Registration • Active apprentice registration in the BC Apprenticeship system • Valid Trade Worker Identification Number from the Industry Training Authority (ITA-ID)	Varies

## Faculty of Trades & Technology

PROGRAM	CREDENTIAL	FORMAT	ADMISSION REQUIREMENTS	START DATES
<b>UNDERGRADUATE PROGRAMS</b>				
<b>Mechatronics and Advanced Manufacturing Technology</b> T U	• Diploma • Certificate	Full-time	English Studies 12 C+ (67%) or equivalent • Satisfy the math requirement at Level E1 of the Math Alternatives Table • Successful completion of Physics 11 (or equivalent) • A Red Seal Endorsement (RSE) may satisfy the math and physics requirement. Visit <a href="http://kpu.ca/trades/">kpu.ca/trades/</a> mechatronics for a list of approved RSEs	Fall September
<b>VOCATIONAL PROGRAMS</b>				
<b>Appliance Service Technician</b> T U Red Seal Trade	• Certificate	Full-time	English 10 C or equivalent, or Composition 10 C or equivalent, or Creative Writing 10 C or equivalent, or Literary Studies 10 C or equivalent, or English First Peoples Writing 10 C or equivalent, or English First Peoples Literary Studies 10 C or equivalent, or KPU's Vocational Trades English Reading Assessment Part II with a minimum score of 50% • Any Math 10 C or equivalent, or KPU's Vocational Trades Mathematics Assessment with a minimum score of 20% • Interview by an instructor	Varies
<b>Automotive Service Technician</b> T U	• Certificate	Full-time	English Studies 12 C or equivalent, or Literary Studies 12 C or equivalent, or English First Peoples 12 C or equivalent, or Composition 12 C or equivalent, or Creative Writing 12 C or equivalent, or KPU's Vocational Trades English Reading Assessment with a minimum score of 75% • Any Math 11 C or equivalent, or KPU's Vocational Trades Mathematics Assessment with a minimum score of 31%	Varies
<b>Carpentry/Building Construction</b> T U	• Citation	Full-time	English Studies 12 C or equivalent, or Literary Studies 12 C or equivalent, or English First Peoples 12 C or equivalent, or Composition 12 C or equivalent, or Creative Writing 12 C or equivalent, or KPU's Vocational Trades English Reading Assessment with a minimum score of 80% • Any Math 11 C or equivalent, or KPU's Vocational Trades Mathematics Assessment with a minimum score of 31%	Varies
<b>Construction Electrician</b> T U	• Citation	Full-time	English Studies 12 C or equivalent, or Literary Studies 12 C or equivalent, or English First Peoples 12 C or equivalent, or Composition 12 C or equivalent, or Creative Writing 12 C or equivalent, or KPU's Vocational Trades English Reading Assessment with a minimum score of 80% • Any Math 11 C or equivalent, or KPU's Vocational Trades Mathematics Assessment with a minimum score of 55%	Varies
<b>Farrier Science</b> T U	• Certificate	Full-time	English Studies 12 C or equivalent or completion of KPU's Vocational Trades English Reading Assessment with a minimum score of 80% • Two references verifying experience handling horses	Fall October
<b>Masonry</b> T U	• Citation	Full-time	English Studies 12 with a minimum grade of 'C' (or equivalent), or Completion of KPU's Vocational Trades English Reading Assessment with a minimum score of 75% • Apprenticeship and Workplace Mathematics 11 with a minimum grade of 'C' (or equivalent), or Foundations of Mathematics 11 with a minimum grade of 'C' (or equivalent) or Pre-calculus 11 with a minimum grade of 'C' (or equivalent) or KPU's Trades Mathematics test with a minimum threshold percentage of 31% Note: Intakes for this program have been postponed indefinitely.	Varies
<b>Metal Fabrication/Fitter</b> T U	• Citation	Full-time	English Studies 12 with a minimum grade of 'C' (or equivalent), or Completion of KPU's Vocational Trades English Reading Assessment with a minimum score of 80% • Apprenticeship and Workplace Mathematics 11 with a minimum grade of 'C' (or equivalent), or Foundations of Mathematics 11 with a minimum grade of 'C' (or equivalent), or Pre-calculus 11 with a minimum grade of 'C' (or equivalent), or KPU's Trades Mathematics test with a minimum threshold percentage of 63%. Note: The next intake is Feb 2023	Varies
<b>Millwright/Industrial Mechanic</b> T U	• Citation	Full-time	English Studies 12 C or equivalent, or Literary Studies 12 C or equivalent, or English First Peoples 12 C or equivalent, or Composition 12 C or equivalent, or Creative Writing 12 C or equivalent, or KPU's Vocational Trades English Reading Assessment with a minimum score of 80% • Any Math 11 C or equivalent, or KPU's Vocational Trades Mathematics Assessment with a minimum score of 55%	Varies

PROGRAM	CREDENTIAL	FORMAT	ADMISSION REQUIREMENTS	START DATES
<b>Parts, Warehousing, Logistics and Distribution</b> M U	• Citation	Full-time	English Studies 12 C or equivalent, or Literary Studies 12 C or equivalent, or English First Peoples 12 C or equivalent, or Composition 12 C or equivalent, or Creative Writing 12 C or equivalent, or KPU's Vocational Trades English Reading Assessment with a minimum score of 75% • Any Math 11 C or equivalent, or KPU's Vocational Trades Mathematics Assessment with a minimum score of 31%	Varies
<b>Plumbing</b> T U	• Citation	Full-time	English Studies 12 C or equivalent, or Literary Studies 12 C or equivalent, or English First Peoples 12 C or equivalent, or Composition 12 C or equivalent, or Creative Writing 12 C or equivalent, or KPU's Vocational Trades English Reading Assessment with a minimum score of 80% • Any Math 11 C or equivalent, or KPU's Vocational Trades Mathematics Assessment with a minimum score of 55%	Varies
<b>Plumbing and Piping</b> T U	• Citation	Full-time	English Studies 12 C or equivalent, or Literary Studies 12 C or equivalent, or English First Peoples 12 C or equivalent, or Composition 12 C or equivalent, or Creative Writing 12 C or equivalent, or KPU's Vocational Trades English Reading Assessment with a minimum score of 80% • Any Math 11 C or equivalent, or KPU's Vocational Trades Mathematics Assessment with a minimum score of 55%	Varies
<b>Welding</b> T U Red Seal Trade (only applies to level 'B')	• Level 'A' Citation • Level 'B' Citation • Certificate	Full-time	<b>For the certificate:</b> English 10 C or equivalent, or Composition 10 C or equivalent, Creative Writing 10 C or equivalent, Literary Studies 10 C or equivalent, English First Peoples Writing 11 C or equivalent, or KPU's Vocational Trades English Reading Assessment Part II with a minimum score of 50%, or KPU's Vocational Trades English Reading Assessment Part II with a minimum score of 50% • Any Math 10 C or equivalent, or KPU's Vocational Trades Mathematics Assessment with a minimum score of 20% . <b>For Level B:</b> Adequate reading comprehension and math skills as assessed by KPU • Satisfactory physical health • Completion of Level 'C' training or successful Level 'C' challenge through ITA • Interview with instructor. <b>For Level A:</b> Adequate reading comprehension and math skills as assessed by KPU • Satisfactory physical health • Completion of level B training plus completion of WELD 2160, Basic Gas Tungsten Arc Welding module, if not completed during Level B training, or successful Level B challenge through ITA	Varies

<b>APPRENTICESHIPS</b>				
<b>Automotive Service Technician</b> T U Red Seal Trade	• Apprenticeship	Full-time	Completed KPU Apprentice Registration • Active apprentice registration in the BC Apprenticeship system • Valid Trade Worker Identification number from the Industry Training Authority (ITA-ID)	Varies
<b>Carpentry/Building Construction</b> T U Red Seal Trade	• Apprenticeship	Full-time	Completed KPU Apprentice Registration • Active apprentice registration in the BC Apprenticeship system • Valid Trade Worker Identification number from the Industry Training Authority (ITA-ID)	Varies
<b>Construction Electrician</b> T U Red Seal Trade	• Apprenticeship	Full-time	Completed KPU Apprentice Registration • Active apprentice registration in the BC Apprenticeship system • Valid Trade Worker Identification number from the Industry Training Authority (ITA-ID)	Varies
<b>Industrial Mechanic/Millwright</b> T U Red Seal Trade	• Apprenticeship	Full-time	Completed KPU Apprentice Registration • Active apprentice registration in the BC Apprenticeship system • Valid Trade Worker Identification number from the Industry Training Authority (ITA-ID)	Varies
<b>Metal Fabrication</b> T U Red Seal Trade	• Apprenticeship	Full-time	Completed KPU Apprentice Registration • Active apprentice registration in the BC Apprenticeship system • Valid Trade Worker Identification number from the Industry Training Authority (ITA-ID) NOTE: Intakes for this program have been postponed indefinitely.	Varies
<b>Parts &amp; Warehousing</b> T U Red Seal Trade	• Apprenticeship	Full-time	Completed KPU Apprentice Registration • Active apprentice registration in the BC Apprenticeship system • Valid Trade Worker Identification number from the Industry Training Authority (ITA-ID)	Varies
<b>Plumbing</b> T U Red Seal Trade	• Apprenticeship	Full-time	Completed KPU Apprentice Registration • Active apprentice registration in the BC Apprenticeship system • Valid Trade Worker Identification number from the Industry Training Authority (ITA-ID)	Varies
<b>Welding</b> T U Red Seal Trade	• Apprenticeship	Full-time	Completed KPU Apprentice Registration • Active apprentice registration in the BC Apprenticeship system • Valid Trade Worker Identification number from the Industry Training Authority (ITA-ID)	Varies

This program guide was updated July 1, 2022. For the most up-to-date information about programs visit » [kpu.ca/calendar](http://kpu.ca/calendar)  
Select programs may have a math requirement. To learn more about your program requirements visit » [kpu.ca/mathalternatives](http://kpu.ca/mathalternatives)

To learn more about a specific program come to an **INFO SESSION**



# Ready to apply?

## FIVE STEPS FROM APPLICATION TO ADMISSION

1

### Review Requirements



At KPU, we have multiple applicant categories: **high school, transfer, mature, and others**. You also need to ensure you meet the admission requirements for your program. These can be found on the program details pages (p.20–27)

» [kpu.ca/admission/requirements](https://kpu.ca/admission/requirements)

2

### Submit your application online



When you apply online, you will be directed to create a profile on **EducationPlannerBC**. Follow the steps to submit your application and pay the **\$40 application fee**. Need help? Contact the Future Students' Office for assistance.

» [kpu.ca/apply](https://kpu.ca/apply)

3

### Access your KPU Online Self-Service Account



Once we receive your application, you will **receive an email** from us with **your student number and login information** for your KPU student email and Online Self-Service (OSS) account. Be sure to check these accounts often for updates and your application checklist.

» [kpu.ca/admission/now-what](https://kpu.ca/admission/now-what)

4

### Submit your documents



**Submit documents and review your online checklist** through your OSS account. If you have attended a BC high school, you will need to **request your transcripts** through the Student Transcript Service (STS).

» [kpu.ca/admission/transcripts](https://kpu.ca/admission/transcripts)

5

### Accept your offer



When you receive an offer letter by email and mail, you will need to accept it by **paying your non-refundable confirmation deposit** through your Online Self-Service account. The confirmation deposit will be **applied to your tuition costs** once you register for classes.

» [kpu.ca/admission/now-what](https://kpu.ca/admission/now-what)



### KPU PLAN

I want to study: \_\_\_\_\_

#### TERM TO START:

- Fall (September)
- Spring (January)
- Summer (May)
- Trades Foundation (year round)

#### ADMISSION CATEGORY:

- Undergraduate
- Graduate
- Vocational
- Preparatory
- Pathway

#### FACULTY:

- Academic and Career Preparation
- Arts
- Business
- Design
- Health
- Science and Horticulture
- Trades and Technology

#### APPLICANT CATEGORY:

- High School
- Transfer Student
- Mature Student
- Other

#### SECOND CHOICE:

- \_\_\_\_\_
- \_\_\_\_\_
- \_\_\_\_\_

**Undergraduate English Proficiency Requirement:** English Studies 12 C+ (67%) or equivalent.

A full list of eligible requirements can be found at:

[calendar.kpu.ca/admissions/english-proficiency-requirements](https://calendar.kpu.ca/admissions/english-proficiency-requirements)

I will meet the **Undergraduate English Requirement** through a (*satisfy one of the options below*):

#### HIGH SCHOOL COURSE

- » English Studies 12 C+ (67%)
- » English First Peoples 12 C+ (67%)
- » Literary Studies 12 C+ (67%)

#### UNDERGRADUATE COURSES

- » 3 credit undergraduate English course: C- (50%)
- » Minimum 60 post-secondary recognized credits with English as the primary language of instruction (CPGA 2.0)

#### TESTING OPTION

##### English Entrance Assessments

*Students must first apply to KPU to obtain a student number before booking a test online*

**KPU English Placement Test (EPT)**

**IELTS Academic** – overall 6.5; no band less than 6.0

**TOEFL** – iBT 88; no sub score less than 20

**LPI** – level 5 with an essay score of 30

**CAEL** – score of 70; no sub score less than 60

**PTE** – score of 61

**Duolingo** – score 110 or higher

*Tests must be taken within the last 2 year and valid for the first day of classes*

#### NONE OF THE ABOVE

Follow the **KPU Pathway** to Undergraduate Studies

- » **Pathway Level 1**
- » **Pathway Level 2**
- » **Pathway Level 3**

Placement into a Pathway level can be achieved through English Studies 12, English Upgrading, ACP English Assessment, Duolingo, or one of the English Entrance Assessments

Full details found at [kpu.ca/pathway](https://kpu.ca/pathway)

Semester	Applications Open	Limited Intake Deadline	Final Deadlines
Fall	Oct 1	Mar 1	July 1
Spring	Feb 1	Aug 1	Nov 1
Summer	June 1	Dec 1	Mar 1

**KPU tests and assessments:** To book a test or find out more information about what entrance tests KPU has to offer: [kpu.ca/testing](https://kpu.ca/testing)

### 1 Apply Online

- » Submit your application through EducationPlannerBC at [kpu.ca/apply](https://kpu.ca/apply) (\$40 fee). You will receive an email from us with your student number and login information within a few days of applying,
- » Access your **Online Self-Service** via [kpu.ca/oss](https://kpu.ca/oss) and your email at [email.kpu.ca](mailto:email.kpu.ca)

### 2 Complete your Application Checklist

- » Monitor your application [kpu.ca/admission/now-what](https://kpu.ca/admission/now-what)
  - » Submit official transcripts [kpu.ca/admission/transcripts](https://kpu.ca/admission/transcripts)
  - » Submit other supporting documentation
  - » Official transcripts must be issued by the educational institution to KPU directly
- Kwantlen Polytechnic University  
Office of the Registrar  
12666 72 Ave., Surrey, BC V3W 2M8

### 3 Accept Your Admission Offer

- » Your admission offer will come in the mail and by email. Pay your non-refundable confirmation deposit by the deadline given.
- Open Intake: \$250  
Limited Intake: \$500
- » Questions regarding your application? Check [kpu.ca/oss](https://kpu.ca/oss) or email [study@kpu.ca](mailto:study@kpu.ca)

### 4 Course Planning 101

- » View the courses in your program [calendar.kpu.ca](https://calendar.kpu.ca)
- » Check your **Registration Status** [one.kpu.ca](https://one.kpu.ca)
- » Book an appointment or attend a drop-in session with a **Central Academic Advisor** [kpu.ca/advising](https://kpu.ca/advising)

### 5 Register for Classes

- » Register on your registration date
- » Access **Online Self-Service** to register, pay tuition fees, obtain your booklist, sign up for Orientation, and more!
- » View the **Academic Timetables** [kpu.ca/registration/timetables](https://kpu.ca/registration/timetables)

Semester	Registration Occurs
Fall	in July
Spring	in November
Summer	in March

### 6 Pay Tuition and Fees

- » How to pay [kpu.ca/advising/new-students](https://kpu.ca/advising/new-students)
- » Tuition deadlines [kpu.ca/registration/dates](https://kpu.ca/registration/dates)
- » How much will my courses/program cost? [kpu.ca/tuitionestimator](https://kpu.ca/tuitionestimator)

### Recommended Actions

#### APPLY FOR FINANCIAL AID

Attend a drop in session or visit their website for details regarding student loans, RESPs, scholarships, and Adult Upgrading Grants.

[kpu.ca/awards](https://kpu.ca/awards)

#### ATTEND AN INFORMATION SESSION

Check to see if your program of interest has an upcoming session to learn more.

**Remember to register!**  
[kpu.ca/info-session](https://kpu.ca/info-session)

#### REGISTER FOR NEW STUDENT ORIENTATION!

Attend a welcome ceremony, meet fellow students, tour the campus, & be shown to your classrooms.

**Sign up at:**  
[kpu.ca/orientation](https://kpu.ca/orientation)

### Additional Notes:

---



---



---

### FUTURE STUDENTS' OFFICE

[kpu.ca/future-students](https://kpu.ca/future-students) | 604.599.3030 | [study@kpu.ca](mailto:study@kpu.ca)

» [kpu.ca](https://kpu.ca)

## DEADLINES

# Don't miss an intake, apply early.

